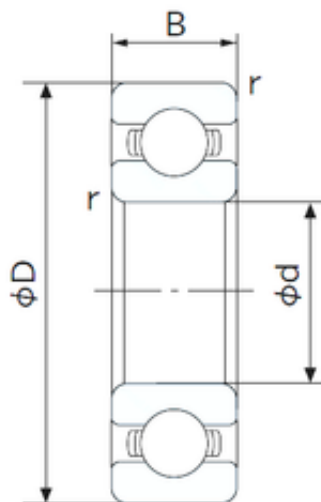




## MANUFACTURING? BEARING INDONESIA



6304 Zz, 6305 Zz-O&Kai Z1V1 Z2V2 Z3V3  
SKF NSK NTN NACHI Koyo Timken Deep  
Groove Ball Bearing, OEM

Bearing No. 6304

Size	20x52x15 mm
Bore Diameter	20 mm
Outer Diameter	52 mm
Width	15 mm
d	20 mm
D	52 mm
B	15 mm
C	15 mm
r min.	1.1 mm
da min.	27 mm
Da max.	45 mm
ra max.	1.1 mm
Weight	0.144 Kg
Basic dynamic load rating (C)	15,9 kN
Basic static load rating (C0)	7,9 kN
(Grease) Lubrication Speed	13000 r/min
Category	Single Row Ball Bearings
Inventory	0.0
Manufacturer Name	NACHI
Minimum Buy Quantity	N/A
Weight / Kilogram	0
Product Group	B00308
Enclosure	Open
Precision Class	ABEC 1   ISO P0

6304 Bearing 2D drawings and 3D CAD models



## MANUFACTURING? BEARING INDONESIA

Maximum Capacity / Filling Slot	No
Rolling Element	Ball Bearing
Snap Ring	No
Internal Special Features	No
Cage Material	Steel
Internal Clearance	C0-Medium
Inch - Metric	Metric
Long Description	20MM Bore; 52MM Outside Diameter; 15MM Outer Race Width; Open; Ball Bearing; ABEC 1   ISO P0; No Filling Slot; No Snap Ring; No Internal Special Features; C0-Medium Internal Clearance; Steel Cage
Other Features	Deep Groove
Category	Single Row Ball Bearing
UNSPSC	31171504
Harmonized Tariff Code	8482.10.50.68
Noun	Bearing
Keyword String	Ball
Manufacturer URL	<a href="http://www.nachiamerica.com">http://www.nachiamerica.com</a>
Weight / LBS	0.32
Inner Race Width	0 Inch   0 Millimeter
Outside Diameter	2.047 Inch   52 Millimeter
Outer Race Width	0.591 Inch   15 Millimeter
Bore	0.787 Inch   20 Millimeter
Bore Type	Cylindrical Bore
Configuration	Single Row
Bore Size	20 mm
Width	15 mm
Fillet Radius/Chamfer	1.1 mm



## MANUFACTURING?BEARING INDONESIA

Dynamic Load Rating	15,900 N
Static Load Rating	7,900 N
Limiting Speed - Grease	14,000 rpm
Limiting Speed - Oil	17,000 rpm
Factor fo	12.4
Radial Clearance	0.005 to 0.020 mm
da (min)	27 mm
Da (max)	45 mm
ra (max)	1.1 mm